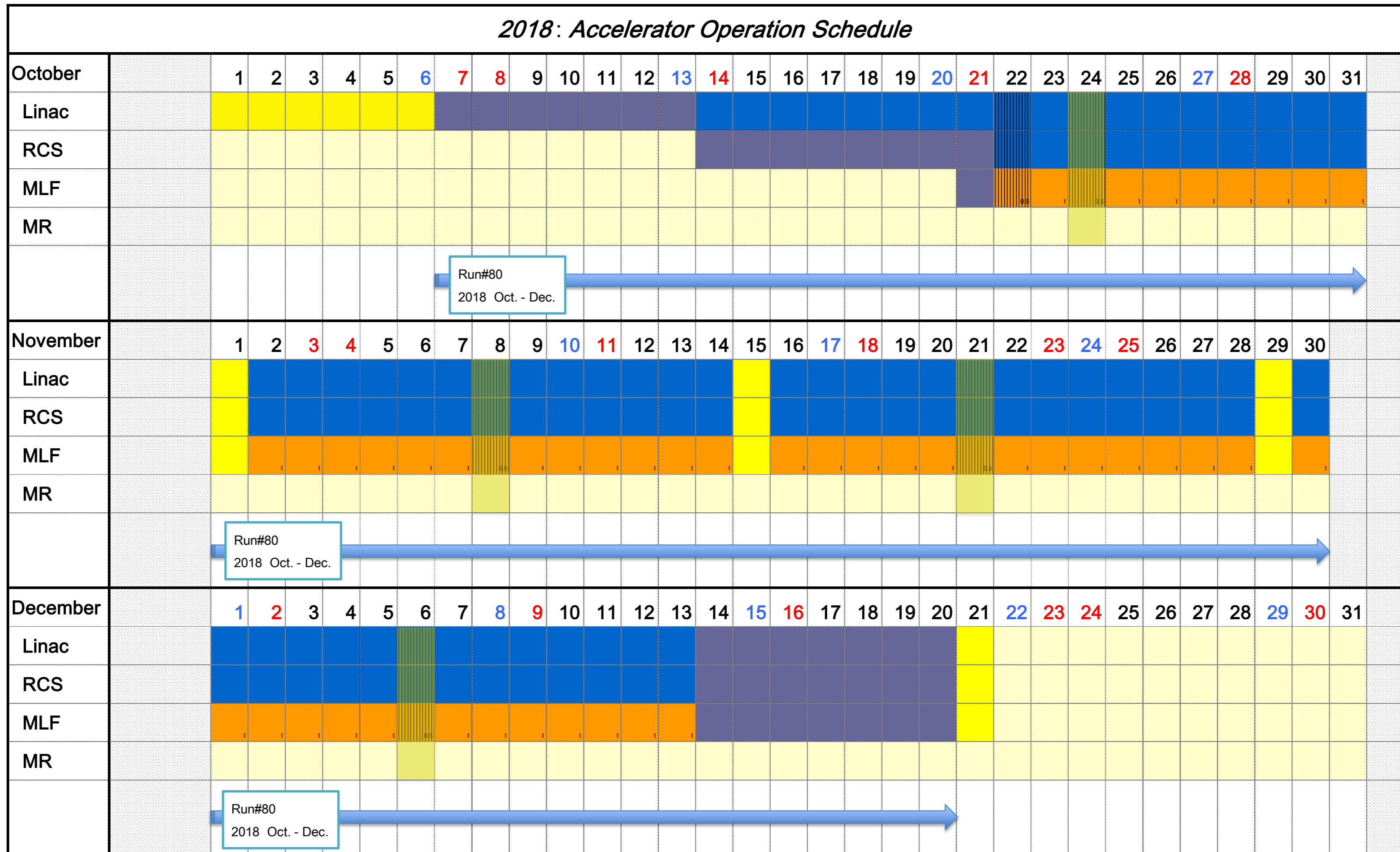


# Plan for operation schedule for FY2018

Linac : Linear accelerator    MR : 50 GeV synchrotron  
 RCS : 3 GeV synchrotron    MLF : Materials and Life Science Experimental Facility



- Maintenance
- Long shutdown/ Maintenance
- Tuning&Study
- Linac, RCS Half-day Study
- User operation
- Half day beam delivery
- MLF user operation
- MLF half day user operation
- MR user operation
- MR half day user operation
- Maintenance in half a day / Study in half a day

※The operation schedule of MR is a tentative version and it may be possible to change in the future.